

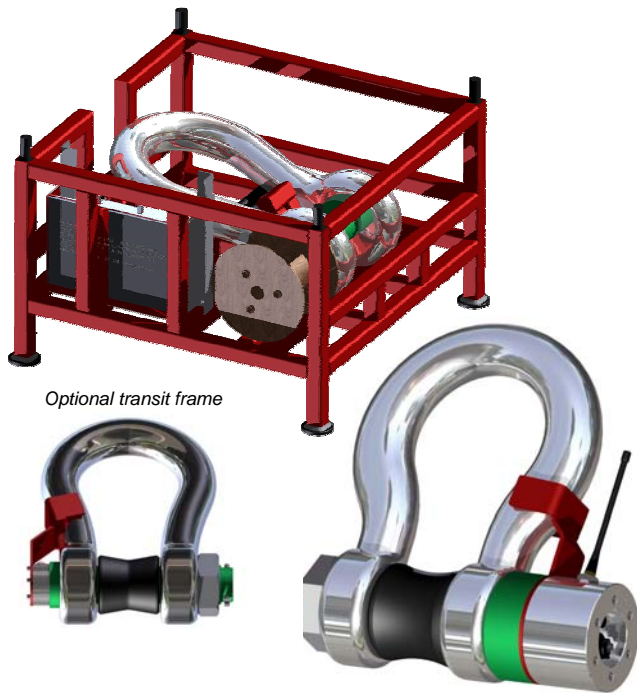


Produced in capacities from 5 to 500 tonnes. The shackle body is manufactured of galvanised alloy steel. The shackle pin (nickel steel up to 35 tonnes, Alloy steel on larger capacities) is retained in the shackle body by means of a nut and split pin, and an anti rotation device is incorporated in the pin to ensure correct alignment. The pin itself is through bored and strain gauges are internally resin bonded at both shear planes. A close fitting tapered steel bobbin is included to ensure that the load is applied through the midline of the shackle pin. Load cell shackles are available in both cabled (**SWLS**) and radio telemetry (**SWLST**) versions.

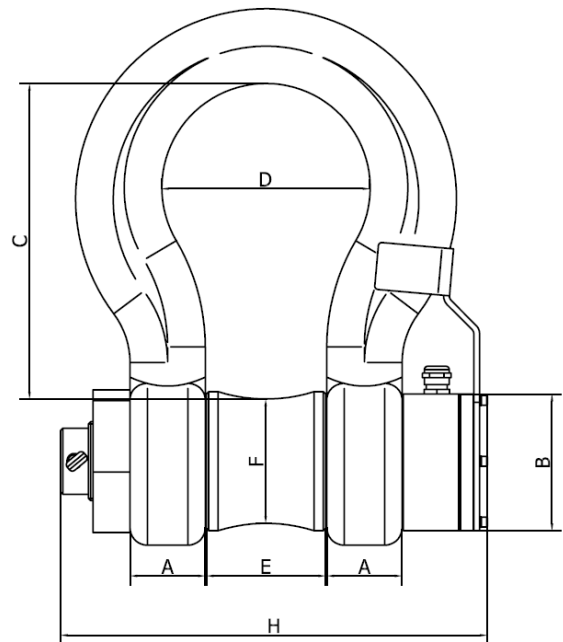
Up to 50 tonnes capacity accuracy is better than 0.5% F.S. over 50 tonnes accuracy is better than 1.0% F.S

### Standard Features:

- Strain gauges fitted within the bore of the shackle pin for maximum protection
- Bow or Dee Shackle to US Federal Specification RRR-C-271D
- IP65 Protection
- Glanded cable 0.5 metres with protective hose
- Robust Nylon reinforced plugs and sockets with locking rings
- Interface to SWLPC display SWLT Frequency 433.92mH
- Mains battery charger with plug
- SWLPC(J) remote radio display (200m range)
- Robust carry case for Display Unit
- 18mm 6 digit LCD display with backlight



Optional transit frame



### Technical Specification

Model	Display	Capacity	A	B	C	D	E	F	G	H	Weight	Temp Range
SWLS50	Cable	50T	66	70	255	177	105	95	110	340	41kg	-10°C to +40°C
SWLST50	Telemetry											
SWLS85	Cable	85T	73	83	335	195	128	110	129	402	70kg	
SWLST85	Telemetry											
SWLS100	Cable	100T	94	94	373	239	150	118	139	480	90kg	
SWLST100	Telemetry											
SWLS150	Cable	150T	100	105	380	265	165	150	170	510	194kg	
SWLST150	Telemetry											
SWLS250	Cable	250T	115	135	495	305	200	200	210	620	450kg	
SWLST250	Telemetry											
SWLS300	Cable	300T	120	120	600	305	200	220	250	665	842kg	
SWLST300	Telemetry											

All measurements are in millimetres for reference only.

For quotation purposes only. Not drawn to scale. This drawing may not include all options offered on the quotation